



# Metalworks Associates

Your production workshop at our own costs

# The inception

In 2021, **Jean-Pierre Manchon** and **Antoine Micaleff** associated to found **Metalworks Associates**.

Noticing a decline in the number of employees available in workshops and a difficulty in hiring, Jean-Pierre Manchon had the idea of offering a **360 degree production service** to companies in need for flexible production resources.

This idea was not so recent though ! Indeed in 2008, Jean-Pierre Manchon had already seized the opportunity to outsource his production and gain in flexibility. In the space of 12 years, he contributed to the growth of real partners capable of machining and mounting various equipment including valves, elbows, SAS doors, glove rings....

Today, Metalworks Associates owns partnerships in France, India, Vietnam, China and can provide you with a **variety of quality** mechanical parts and welded assemblies at the best price.

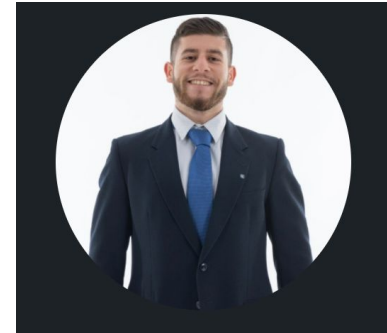


**METALWORKS  
ASSOCIATES**  
WE UNLOCK YOUR SUCCESS



**Jean-Pierre Manchon**

*“During my professional career, I’ve been working in only one single company: Jacomex SAS. I started at the age of 14 years old in the workshop with my father and grew the business during the following 45 years. When I sold Jacomex in 2019, I wanted to share my experience with others. Happy to do so with Metalworks Associates now !”*



**Antoine Micaleff**

*“I started my professional career as a business developer when Jean-Pierre gave me in 2018 the opportunity to develop a branch office of Jacomex in Germany. Since then, I’ve explored many concepts of mechanical and electrical engineering. Curious and solution-oriented, I am delighted to support my customers in their great endeavours.”*



**METALWORKS  
ASSOCIATES**  
WE UNLOCK YOUR SUCCESS

## Our Business Model

Characterized by over **40 years of experience** in the manufacturing of precision mechanics and welded assemblies, Metalworks Associates aims to support European manufacturers in the development of their production capacities.

In that mission, we rely on our production partners certified and committed to deliver quality products as per our customers requirements.



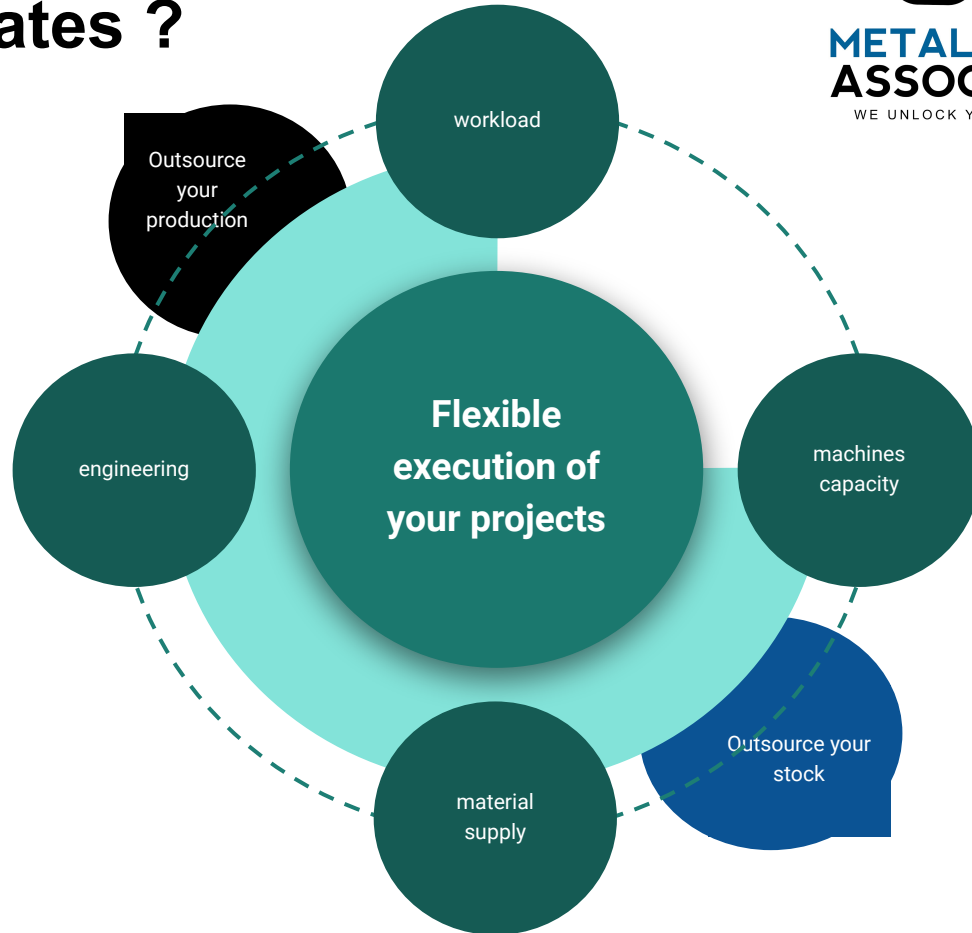
# Why should you **start** working with **Metalworks Associates** ?



**METALWORKS  
ASSOCIATES**  
WE UNLOCK YOUR SUCCESS

Lack of **available resources**, research for **qualified personnel**, surging energy tariffs, high investment costs, volatile material prices, project cycles are many reasons that lead to the need for **more flexibility** in the production.

Metalworks Associates analyses your needs and offers you a **turnkey solution** to optimize your production.



# Our locations : We deliver across Europe from our workshops in Asia & France



**METALWORKS  
ASSOCIATES**

WE UNLOCK YOUR SUCCESS



Metalworks Associates is headquartered in La Boisse (01120 - France).

Metalworks Associates has production facilities in **Asia** (China, Vietnam, India) and **France**.

Cumulated, **over 1 000 collaborators** are **available to manufacture** your mechanical components and equipment.



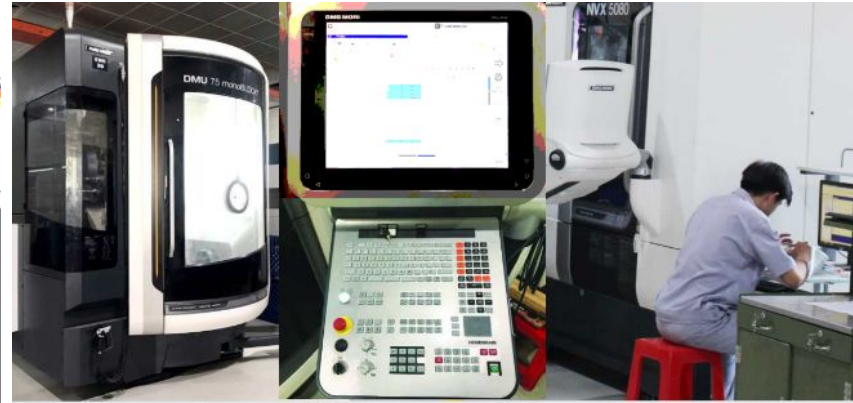


# Our capacities: Milling & Turning



**METALWORKS  
ASSOCIATES**  
WE UNLOCK YOUR SUCCESS

“We deliver *finished parts* at *any volume* ...” Visit our machine park [HERE](#)



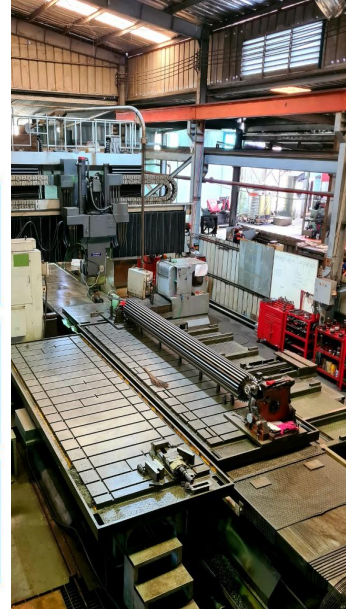
# Our capacities: Milling & Turning

“... And of **any size!**” Visit our machine park [HERE](#)

## NEWAY CNC MILLING-MACHINE NEWAY CNC 門型マシニングセンター

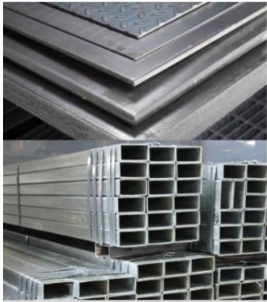
### WORKTABLE TRAVEL

X axis	4200 mm
Y axis	3200 mm
Z axis	1000 mm
B axis	90° Machining the top 5 faces 90°
Distance from spindle nose too worktable	200 - 1200 mm
Distance between columns	2800 mm

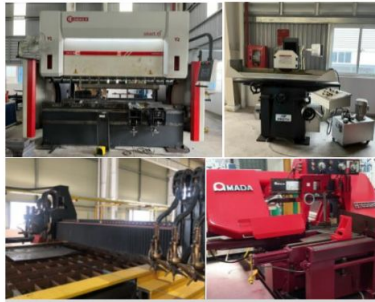




# Our capacities: Metal structures



RAW MATERIALS



CUTTING



PUNCHING



ASSEMBLY



BENDING - MILLING



WELDING



SURFACE TREATMENT



CHECKING/FINAL INSPECTION



PACKING LOADING SHIPMENT





# Our capacities: welding and assembly



# Our realisations : Your production 360°



## Design

If required and based upon customer specifications, Metalworks Associates supplies 2D/3D drawings.

## Machining

CNC turning & milling, metal casting, plastic injection, pressing, punching.

## Sheet metalworking

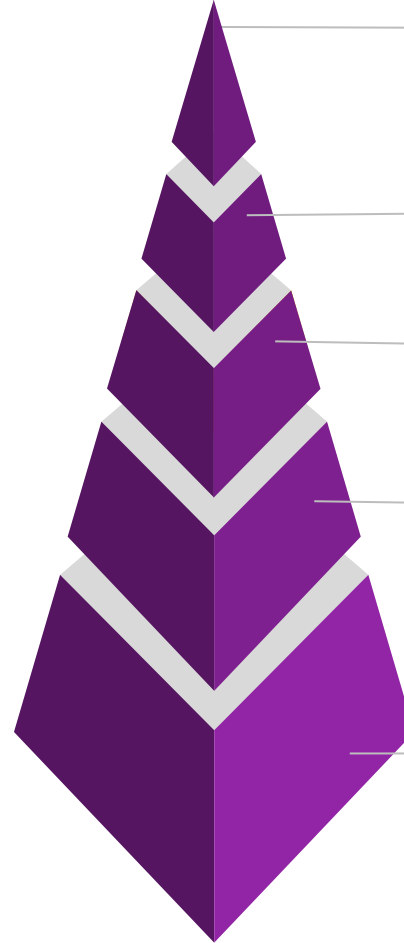
Cutting, punching, bending.

## Surface treatment & finishing

Heat treatment, sandblasting, galvanizing, anodizing, nickel-plating, electro-polishing, mirror-polishing, powder coating.

## Final assembly & testing

Tig/Mig/Laser Welding, screwing, leak testing



# Contact us ...



Our **E-Mail Address** for your price inquiries: [info@metalworksassociates.com](mailto:info@metalworksassociates.com)

Our **Hotline support**: (FR) +33 6 75 85 57 86

Our **Website** for more information: <https://www.metalworksassociates.org/>

We are looking forward to contributing to your production growth !

Don't forget to follow our [Linkedin page](#) to stay up to date with our projects